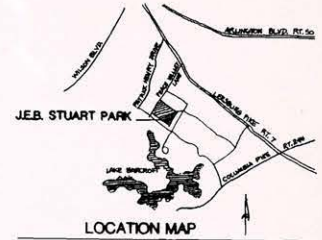
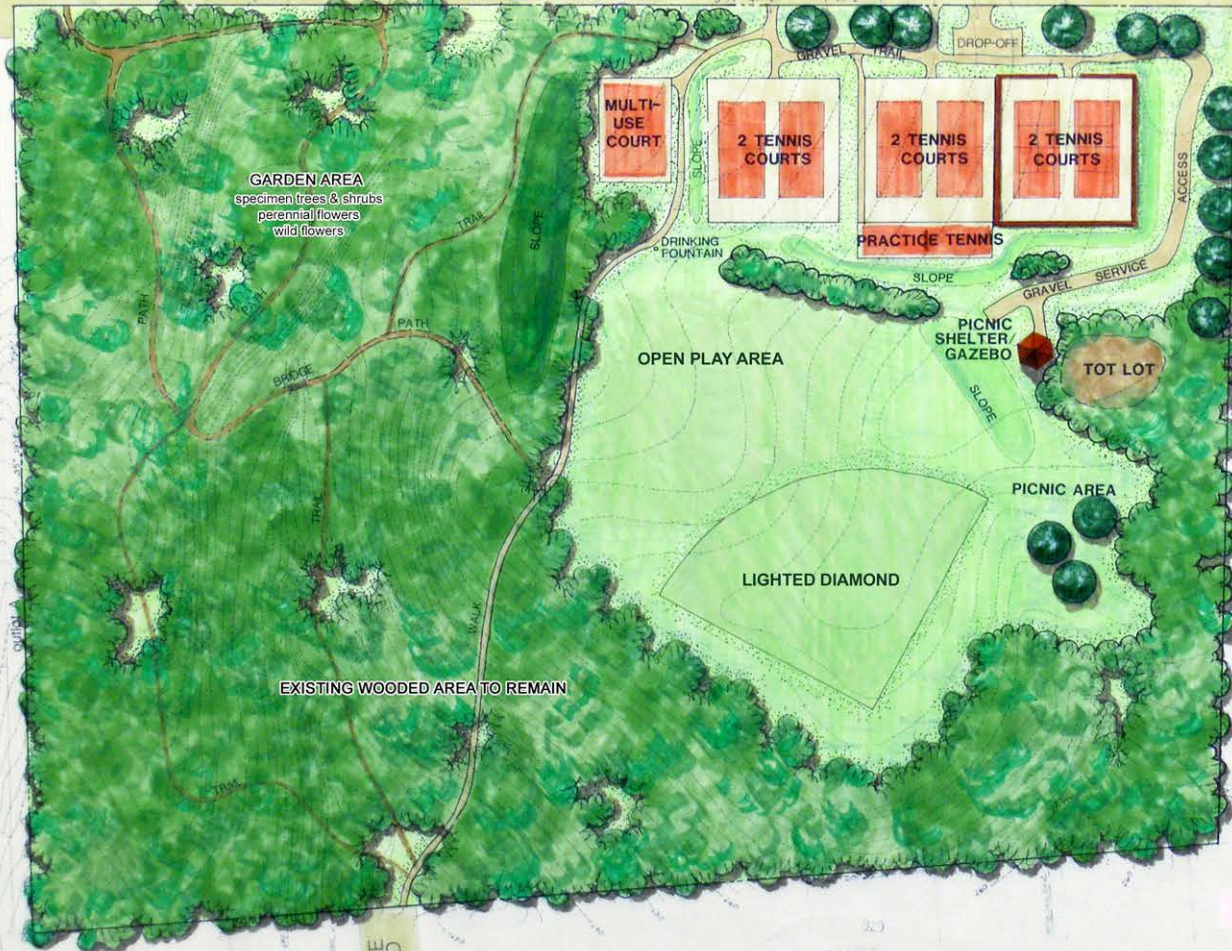


J.E.B. STUART HIGH SCHOOL

PEACE VALLEY LANE



LOCATION MAP

MASTER PLAN AMENDMENT J.E.B. STUART PARK

FAIRFAX COUNTY, VIRGINIA
MAP SECTION 61-1 18 ACRES
APPROVED: JUNE 24, 2009



NOTE: Property Information and Topography for Master Planning Only
Contour Interval = 2 Feet